

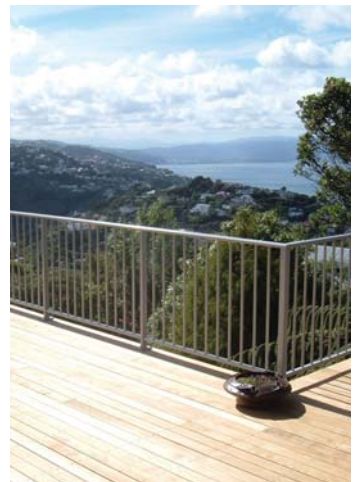


ALUMA  
BALUSTRADES

## BALUSTRADES FOR FINE HOMES







Turn page over to view Product Selection





**ALUMA**  
BALUSTRADES

# ALUMA BALUSTRADES

Exceptional quality and style in a wide range of designs, ALUMA Balustrades can meet your safety needs while enhancing your home. Custom made to suit virtually any deck shape, including curved, ALUMA Balustrades provide durable aluminium solutions to meet your requirements.

## APPLICATIONS

ALUMA Balustrades can be used in a wide range of building applications;

- ≡ Residences and Multi-Residential Developments
- ≡ Motels, Hotels, Rest Homes and Hospitals
- ≡ Offices, High-Rise Buildings
- ≡ Municipal Facilities
- ≡ Pool Fences and Gates

## PRODUCT SELECTION

A wide selection of popular styles are available from within our five main product ranges (refer to following pages), or simply contact us to discuss your design preferences.

## COLOUR AND FINISHING

Balustrades can be finished with either a powdercoat or anodised coating. A wide range of colours are available to choose from. This can allow the balustrade to complement the aluminium joinery, blend into the surrounding building elements or stand out as a feature.

## ELEGANCE

Designed to appeal, with an emphasis on stylish lines and fine detailing. The choice of discerning home owners.

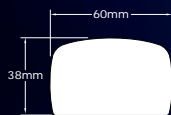
## DURABILITY

Built for durability, ALUMA Balustrades are constructed from aluminium using stainless steel fasteners and finished with a powdercoated or anodised surface for minimal maintenance.

## SAFETY AND COMPLIANCE

Structurally engineered and tested for superior strength and safety, and incorporating high strength aluminium sections. ALUMA Balustrades are designed for compliance with the New Zealand Building Code.





### DÉCOR-RAIL

The 'Décor Rail' collection remains the most popular and cost-effective range. It is characterised by square or rectangular profiles, softened with well-rounded edges and a gently radiused handrail to provide a comfortable grip. Décor-Rail provides timeless design to complement a wide range of contemporary architectural styles.



Décor Modern

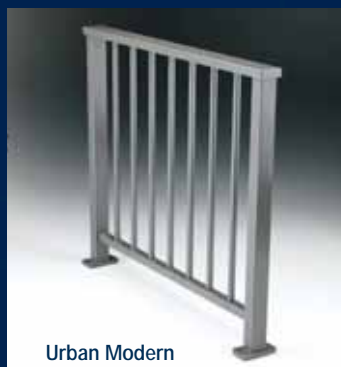


Décor Duo



### URBAN-RAIL

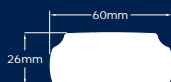
The 'Urban' series is specifically suited to architecture which favours the square, modular minimalist style, which is often associated with a mono-pitch roof and metallic finishes. The Urban-Rail is characterised by this 'square' theme, and is well-suited to be finished in a high metallic content silver powdercoat, or in a natural anodise.



Urban Modern



Urban Duo



### RAIL-PROVENCE

The simple yet decorative styles of the Mediterranean wrought iron balustrades are available in a rust-free low maintenance alternative – 'Rail-Provence'. The narrow yet sturdy profiles and scalloped handrail are the trademark of Rail-Provence, along with an optional range of decorative motifs (Diamond, Ring and Cross). If your architecture is reminiscent of this ageless Mediterranean style, Rail-Provence is the obvious solution.



Monaco



Toulon



### RONDO-RAIL

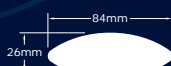
The truly round handrail and post profiles of Rondo-Rail complement architecture which favours the simplicity of a circular form. The Rondo-Rail incorporates an innovative weld-free system of joining circular profiles, giving it a unique clean-look finish. The round top rail provides a comfortable safe handrail. The Rondo-Rail also offers a square post option, which may be preferred as it can achieve greater post spans and be more economical.



Rondo Glazed



Rondo Horizon



### VISTA-RAIL

The Vista-Rail series is unique with the glass spanning in between the posts. The glass is supported by glazing recesses within the posts. The crisp clean lines of the exposed top and lower edges of the glass are synonymous with modern architecture and high quality homes.



Vetro



Spectra





Décor Glazed



Décor Horizon



Urban Glazed



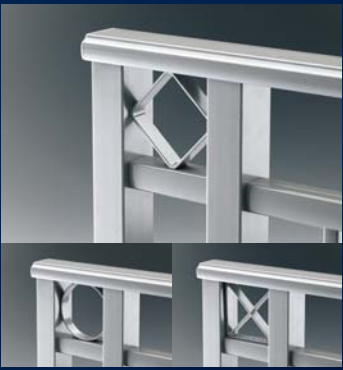
Urban Horizon



Tropez



Marseilles



Rondo Glazed  
(square posts)



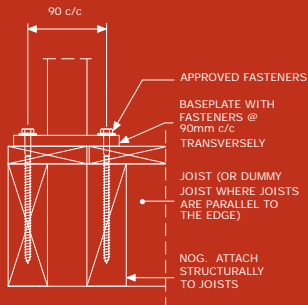
Rondo Horizon  
(square posts)



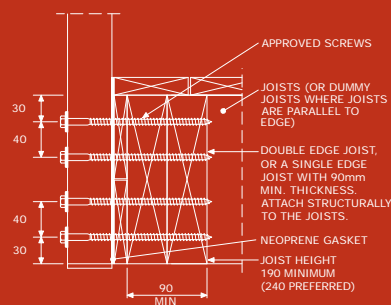


**ALUMA**  
BALUSTRADES

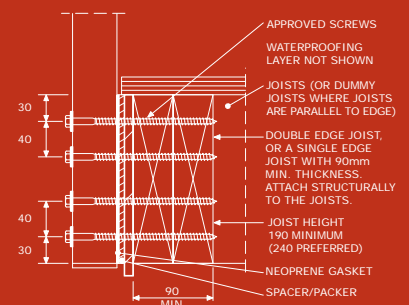
## TYPICAL BALUSTRADE FIXING DETAILS



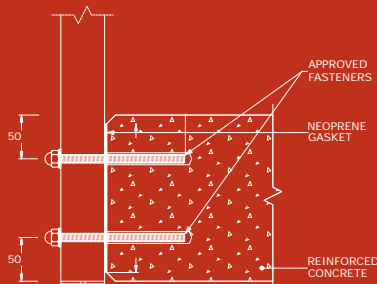
Top-mounted to open timber framed deck



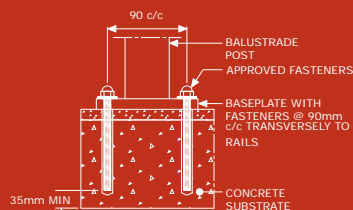
Side-mounted to open timber framed deck



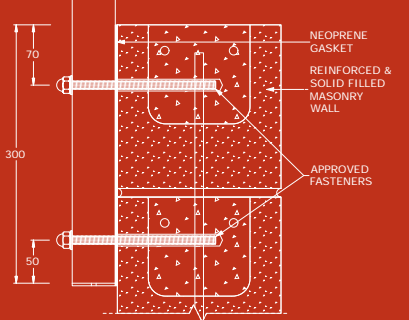
Side-mounted to sealed timber framed deck



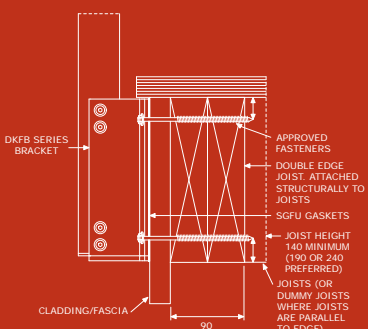
Side-mounted to concrete slab



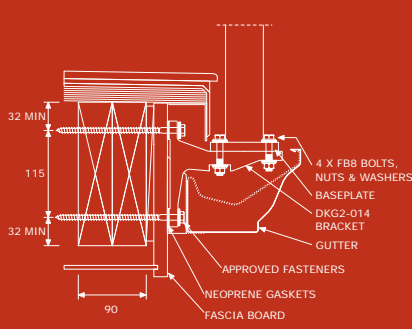
Top-mounted to concrete slab



Side-mounted to concrete masonry walls



Side-mounted to timber with proprietary #DKF brackets



Side-mounted to timber with proprietary #DKG2 gutter brackets

**Alternative fixing details are available. Please consult with Unex Systems.**

Contact  
**Unex Systems**  
or your local  
Fabricator today  
to discuss your  
balustrade  
requirements

Unex Systems (NZ) Ltd  
P O Box 92  
Hamilton 3240  
New Zealand

p +64 7 850 9464

0800 333 777

f +64 7 850 9465

e [info@unex.co.nz](mailto:info@unex.co.nz)

w [www.unex.co.nz](http://www.unex.co.nz)