

Recommend this document is used
in conjunction with E2/AS1 and
WANZ Guide to E2



Cavity Construction Aluminium Joinery Installation

Recommend this document is used
in conjunction with E2/AS1 and
WANZ Guide to E2



Step 1
cut building wrap @ 45° from each corner



NB: These 2 steps ensure only a
minimal amount of timber is left
exposed at the corners

Step 2
Staple building wrap at edge of sill trim

Recommend this document is used
in conjunction with E2/AS1 and
WANZ Guide to E2



Step 3
Prepare the corners for sill tapes

NB:
There is no "1" product recommended
here
The Thermakraft, Aliband shown, has
2 methods for preparing the sill
corners.

Ensure you are familiar with the
installation recommendations for
the product you are using.

Flexible tapes



Rigid tapes



Recommend this document is used
in conjunction with E2/AS1 and
WANZ Guide to E2



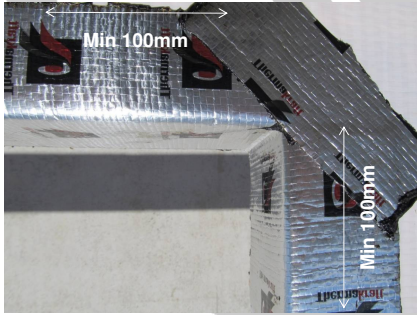
Step 4
Sill tapes, minimum 100mm up at the
sill

NB:
Sill Tapes must cover all exposed/raw
timber, so some instances may
require for more sill tapes
This is more common on larger
framing eg 140mm vs 90mm



Step 4a
Full length along the sill

Recommend this document is used
in conjunction with E2/AS1 and
WANZ Guide to E2

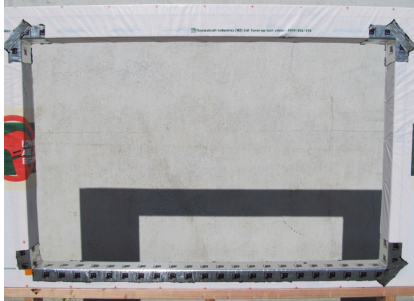


Step 5

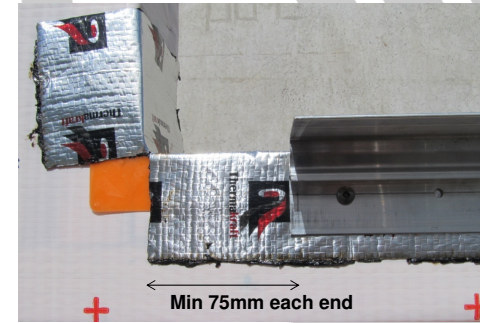
Head tapes, minimum 100mm from
each corner

NB:

100mm each end at the head
Tapes must cover all exposed/raw
timber, so some instances may
require for more sill tapes
This is more common on larger
framing eg 140mm vs 90mm



Recommend this document is used
in conjunction with E2/AS1 and
WANZ Guide to E2



Step 6

Cut Sill Support Bar

Sill Bar cut short by 75mm each end
= 150mm in total

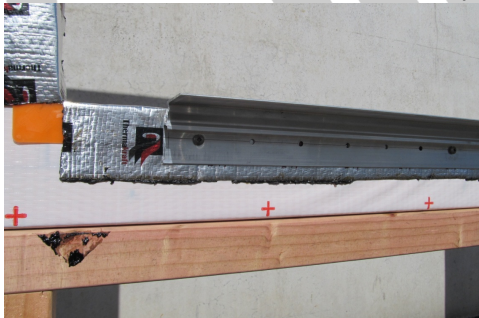
NB:

The 150mm reduction in sill support
bar width:

- Will miss the corner soakers
- Provides loading bearing on the
drainage tray/support block



Recommend this document is used
in conjunction with E2/AS1 and
WANZ Guide to E2



Step 7

Fit Sill Support Bar

10g x 50mm (min) Stainless Steel
fixings

Maximum 300mm centres

NB:

Location Brackets MO252B used to
locate sill support bar
5mm below sill trimmer
with support 5mm above sill trimmer
Location Brackets can be removed, or
can remain as intermittent packers
at the sill



Recommend this document is used
in conjunction with E2/AS1 and
WANZ Guide to E2



Step 8

Insert aluminium joinery

NB:

Location Brackets MO252B used to
locate sill support bar
5mm below sill trimmer
with support 5mm above sill trimmer
Location Brackets can be removed, or
can remain as intermittent packers
at the sill

Step 9

Fix aluminium joinery into position

Fixings to be min 2 x 65mm jolt head
nail

or 8g x 75mm SS screw

150mm from corners

450mm centres thereafter

NB, each fixing point to be packed



Recommend this document is used in conjunction with E2/AS1 and WANZ Guide to E2



Min 20mm each end

Step 10

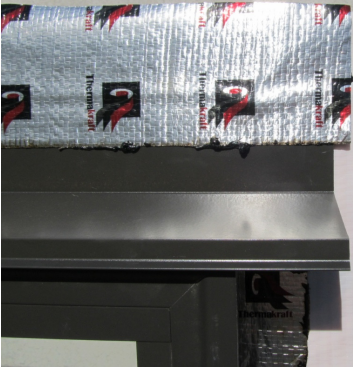
Fit Head Flashing
Minimum 20mm overhang each end of joinery

Step 11

Fit Head Flashing Tape over head flashing
Minimum 35mm overhang on flashing and 50mm overhang on building under lay

NB:

Alternative to head flashing tapes is another layer of under lay over the top of the head flashing taken from next overlap above



Recommend this document is used in conjunction with E2/AS1 and WANZ Guide to E2



Step 12

Fit SH014 End caps to each end of head flashing
Seal end cap to head flashing

NB:

An Alternative to end caps, is an upturn, minimum 15mm

Step 13

All 4 sides Airseal into minimum 5mm gap
PEF rod to be used

NB:

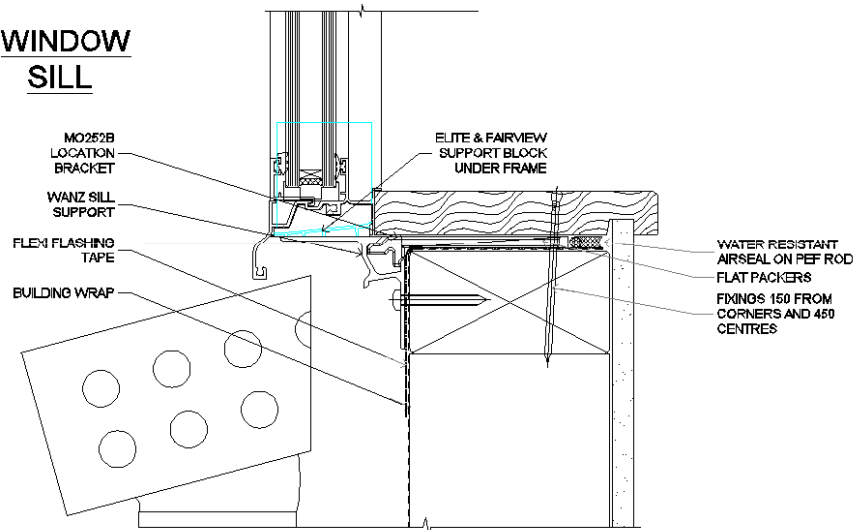
PEF Rod ensures the foam does not fill the trim cavity,
Filling the trim cavity is bad practice and can cause failures
Low expansion foam recommended to ensure controlled application of internal airseal



Recommend this document is used in conjunction with E2/AS1 and WANZ Guide to E2



WINDOW SILL



Recommend this document is used in conjunction with E2/AS1 and WANZ Guide to E2



CAVITY CONSTRUCTION COMPONENTS

Components shown include: FAIRVIEW Support Blocks (AD225, AD224), Elite Support Blocks (MO254B, MO250B, MO251B, MO253B, MO257B), Elite Support Bars (00470, 00471, 00472, 00474, 00473), MO252B WANZ Support Bar Location Bracket, SH014B E2 Head Flashing End Cap, and DY615 Plastic Corner Soaker.